

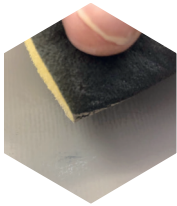
Best bond  
in the business...



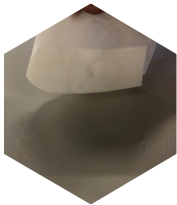
## 2 PART ADHESIVE HOW TO GUIDE

Firstly ensure you have the correct adhesive for the substrate. When working with delicate surfaces, such as, Mirror acrylic, ACM, BCP, DI-BOND etc, we advise using INDASOL LX Adhesive. The reason for this is that standard 2 part locator bonding adhesives can generate heat which may distort the face of the substrate.

**!**  
We have products for all substrates, including Mirror Acrylic, BCP, Di-Bond, Metal, Wood, Plastics, Glass, Brass and Stainless Steel.



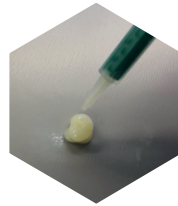
**Step 1:** Lightly scuff both substrates with sandpaper. This is an optional process, however by doing this it does increase the surface area for the bond.\*



**Step 2:** Ensure the substrates are clean. Use INDASOL IPA surface cleaner if necessary to remove finger grease and any sanding dust from step 1. For stainless steel and low surface energy substrates, use INDASOL 1960 primer



**Step 3:** Place cartridge into gun and remove cap. Gently squeeze trigger until adhesive appears in left and right outlet. Wipe excess adhesive with a clean cloth downwards, trying not to mix part A&B where possible This is to the burp the cartridge. Fix nozzle in place and dispense a small amount into a waste container to ensure you have a perfect mix.



**Step 4:** Apply the adhesive to one substrate either in blobs or as a bead. Thickness and diameter of this depends on the work being done and surface area available.



**Step 5:** Bring the substrates together ensuring that the bond is good. Adhesive should be compressed to 0.5mm-1.0mm in overall thickness. Each product has a short window for movement. Do not interfere with bond or move product outside of the initial work time (see TDS for details).



**Step 6:** Leave for 24 hours (or as advised on data sheet) to fully cure before fixing.

Disclaimer: These suggestions and data are based on information we believe to be reliable and accurate, but no guarantee of their accuracy is made. Industrial Adhesive Solutions Limited shall not be liable for any damage, loss or injury, direct or consequential arising out of the use or the inability to use the product. In every case, we urge and recommend that purchasers, before using any product in full scale production, make their own tests to determine whether the product is of satisfactory quality and suitability for their operations, and the user assumes all risk and liability whatsoever, in connection therewith. Please contact us for further assistance and information.

Visit our website to view our extensive range of sign fixing tapes and adhesives, including:



Channel Fixing, Banner Hemming and Stiffening Tapes, Locator Bonding Adhesives, Unique 3D SIGN-BLOCK, Optically Clear Products and safe alternatives to Acrylic Bonding Adhesives.



For further information, samples and a demonstration, please contact:

0121 556 9900

enquiry@indasol.co.uk

[www.indasol.co.uk/signmakers](http://www.indasol.co.uk/signmakers)