

Best bond  
in the business...

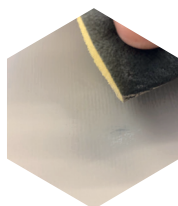
# HOW TO GUIDE

## LOCATOR BONDING

### Firstly ensure you have the correct adhesive for the substrate.

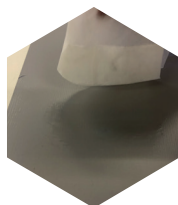
When working with delicate surfaces, such as, Mirror acrylic, ACM, BCP, DI-BOND etc, we advise using INDASOL LX Adhesive. The reason for this is that standard 2 part locator bonding adhesives can generate heat which may distort the face of the substrate.

**!**  
We have products for all substrates, including Mirror Acrylic, BCP, Di-Bond, Metal, Wood, Plastics, Glass, Brass and Stainless Steel.



**Step 1:** Lightly scuff the substrate and back of locator with sandpaper. This is an optional process, however by doing this it does increase the surface area for the bond.\*

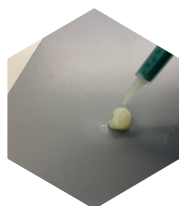
\*This process must be done when using LX products.



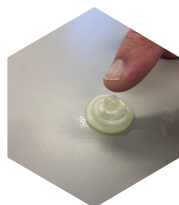
**Step 2:** Ensure the substrate and locator are clean. Use INDASOL IPA surface cleaner if necessary to remove finger grease and any sanding dust from step 1. For stainless steel and low surface energy substrates, use INDASOL 1960 primer



**Step 3:** Place cartridge into gun and remove cap. Gently squeeze trigger until adhesive appears in left and right outlet. This is to burp the cartridge. Fix nozzle in place and dispense a small amount into a waste container to ensure you have a perfect mix.



**Step 4:** Apply a blob of adhesive to the substrate. Ideal size would be same diameter as locator foot at approx. 2-3mm high.



**Step 5:** Place the locator into the adhesive. Do not force it flat to the substrate. Just move around gently so that the adhesive comes out of the edge and bonds to the outer diameter of the foot. You should be left with approx. 0.5mm-1mm thick adhesive between foot and substrate.



**Step 6:** Leave for 24 hours (or as advised on data sheet) to fully cure before fixing.

**Disclaimer:** These suggestions and data are based on information we believe to be reliable and accurate, but no guarantee of their accuracy is made. Industrial Adhesive Solutions Limited shall not be liable for any damage, loss or injury, direct or consequential arising out of the use or the inability to use the product. In every case, we urge and recommend that purchasers, before using any product in full scale production, make their own tests to determine whether the product is of satisfactory quality and suitability for their operations, and the user assumes all risk and liability whatsoever, in connection therewith. Please contact us for further assistance and information.

Visit our website to view our extensive range of sign fixing tapes and adhesives, including:



Channel Fixing, Banner Hemming and Stiffening Tapes, Locator Bonding Adhesives, Unique 3D SIGN-BLOCK, Optically Clear Products and safe alternatives to Acrylic Bonding Adhesives.